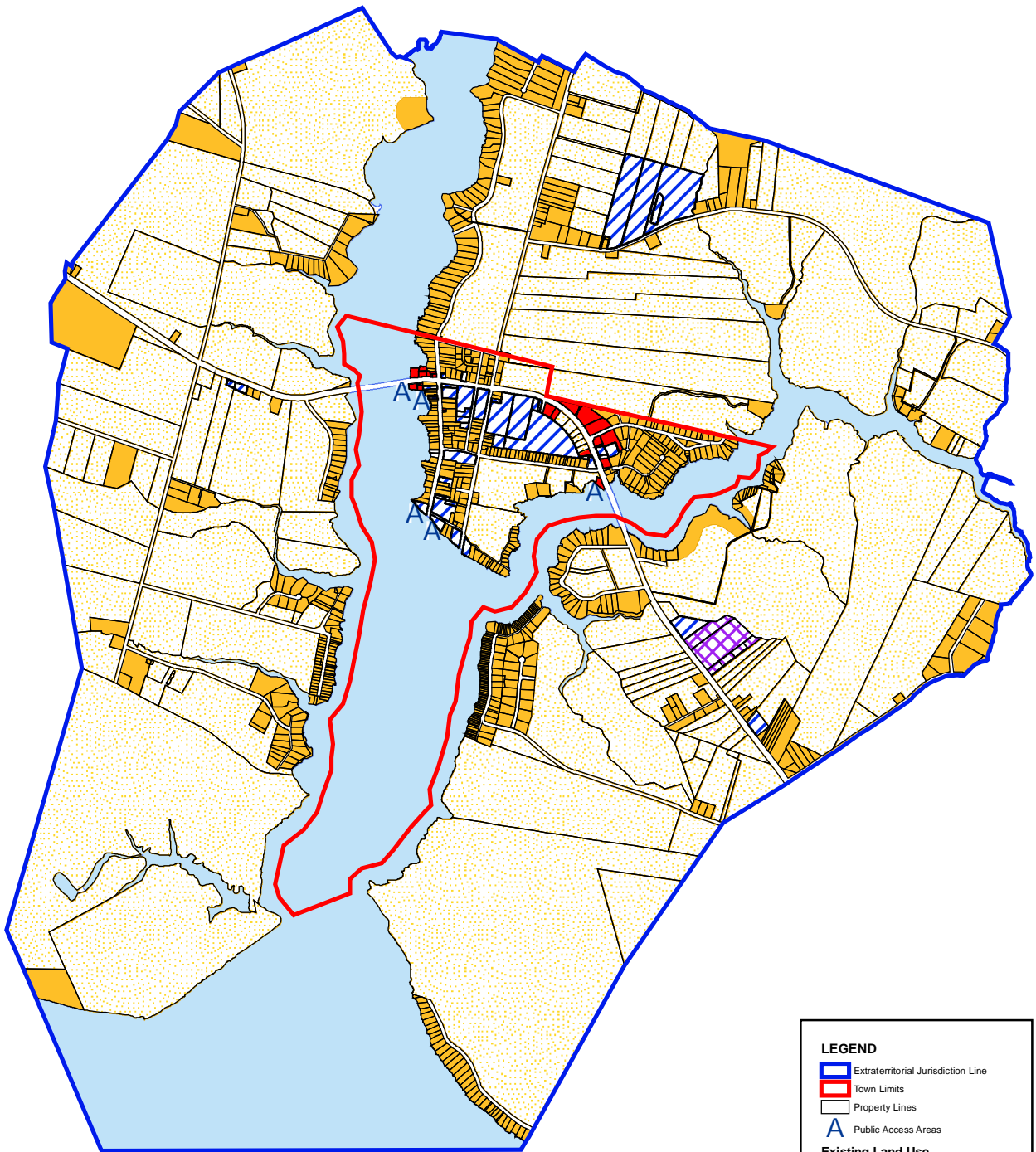


Town of Bath Existing Land Use

p



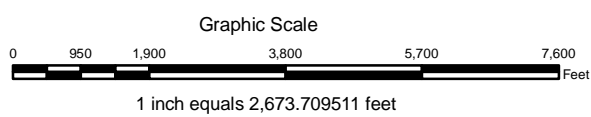
LEGEND

- Extraterritorial Jurisdiction Line
- Town Limits
- Property Lines
- Public Access Areas

Existing Land Use

- Undeveloped, Agriculture & Forestry
- Residential
- Commercial
- Public, Institutional & Recreation
- Industrial
- Water

Please note: This map was created by tracing parcel data from the Beaufort County Land Records Department. This is not a survey and does not meet map accuracy standards. It is however, a good representation of the actual parcel coverage to be used for planning purposes only.

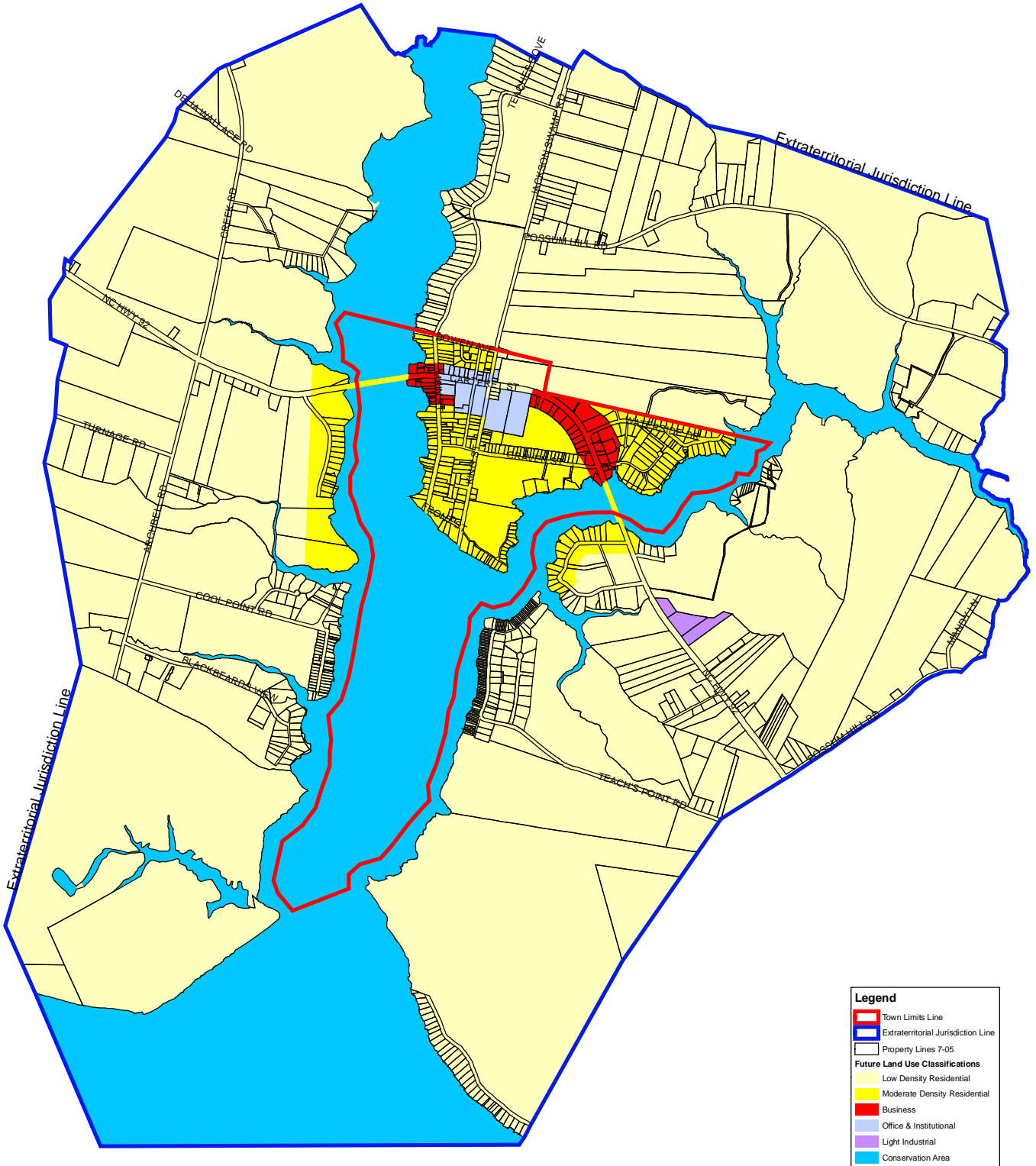


North Carolina
Department of
Commerce

**Division of
Community
Assistance**

Map Prepared 7-29-2005

CAMA FUTURE LAND USE MAP OF THE TOWN OF BATH, NC



Legend

- Town Limits Line
- Extraterritorial Jurisdiction Line
- Property Lines 7-05

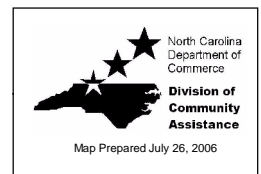
Future Land Use Classifications

- Low Density Residential
- Moderate Density Residential
- Business
- Office & Institutional
- Light Industrial
- Conservation Area

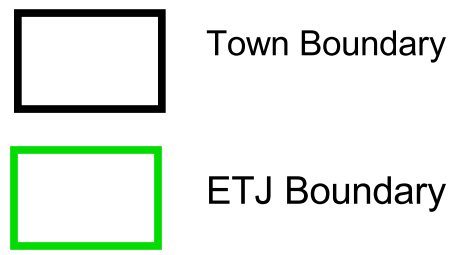
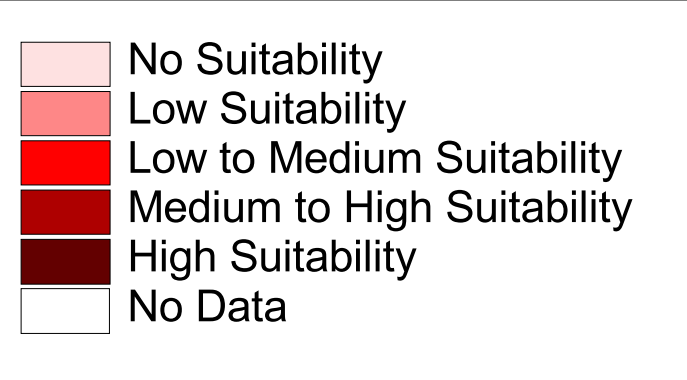
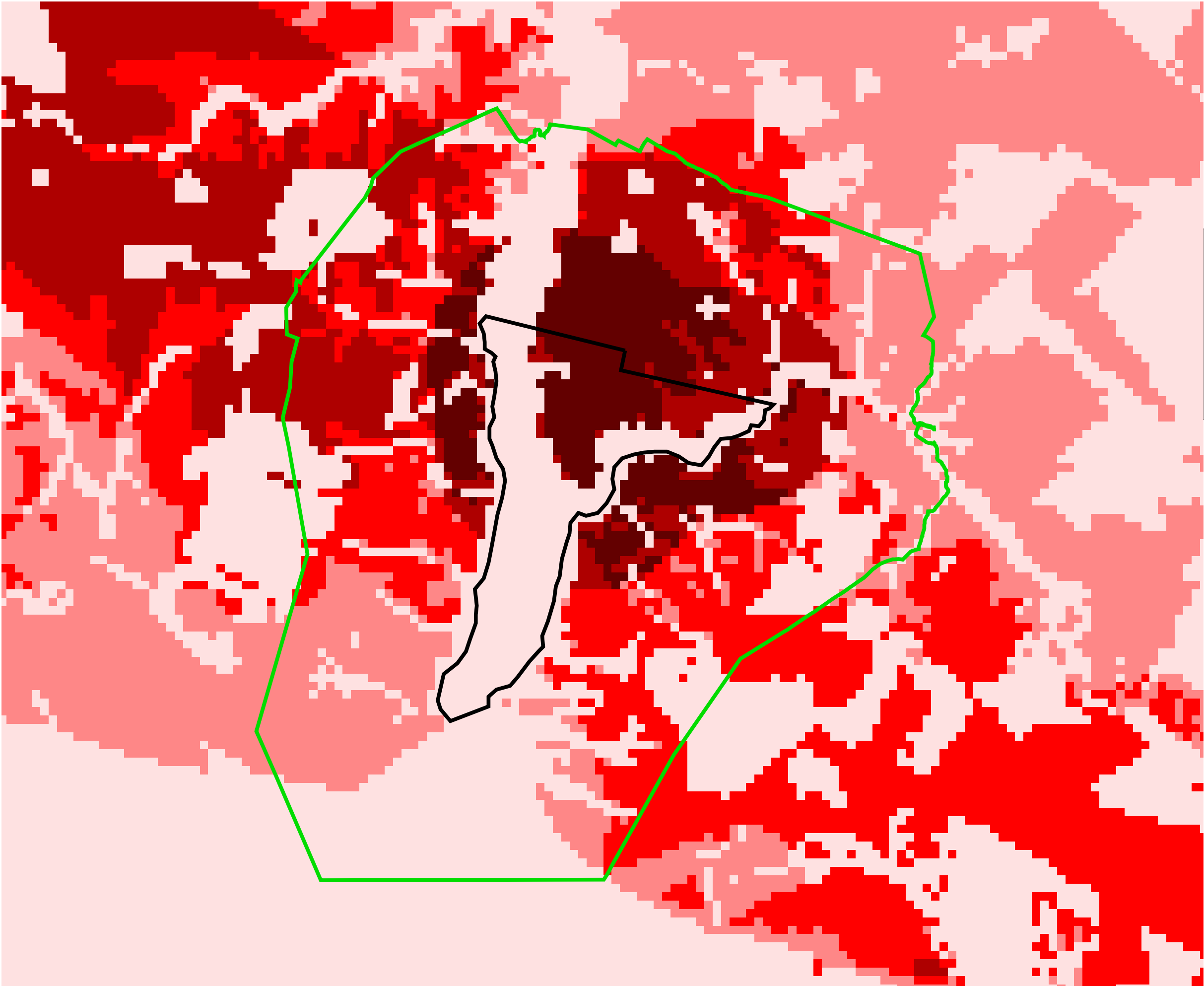
Hydrological units: 03030703020104



Note that AEC's and 404 areas are intensively described by their characteristics in either state or federal regulations. Those areas shown on the map are general locations only due to mapping scale limitations. Users should refer to referenced regulations for definitive descriptions for precise locations.



Town of Bath Land Suitability Analysis Map



Prepared by NC Division of
Coastal Management
April 2005