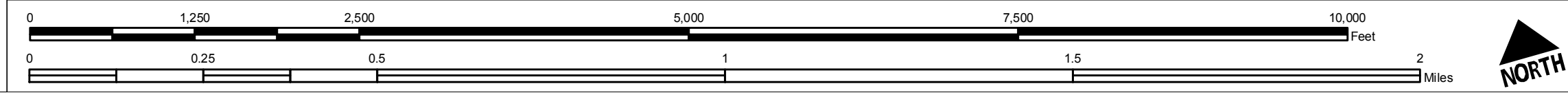
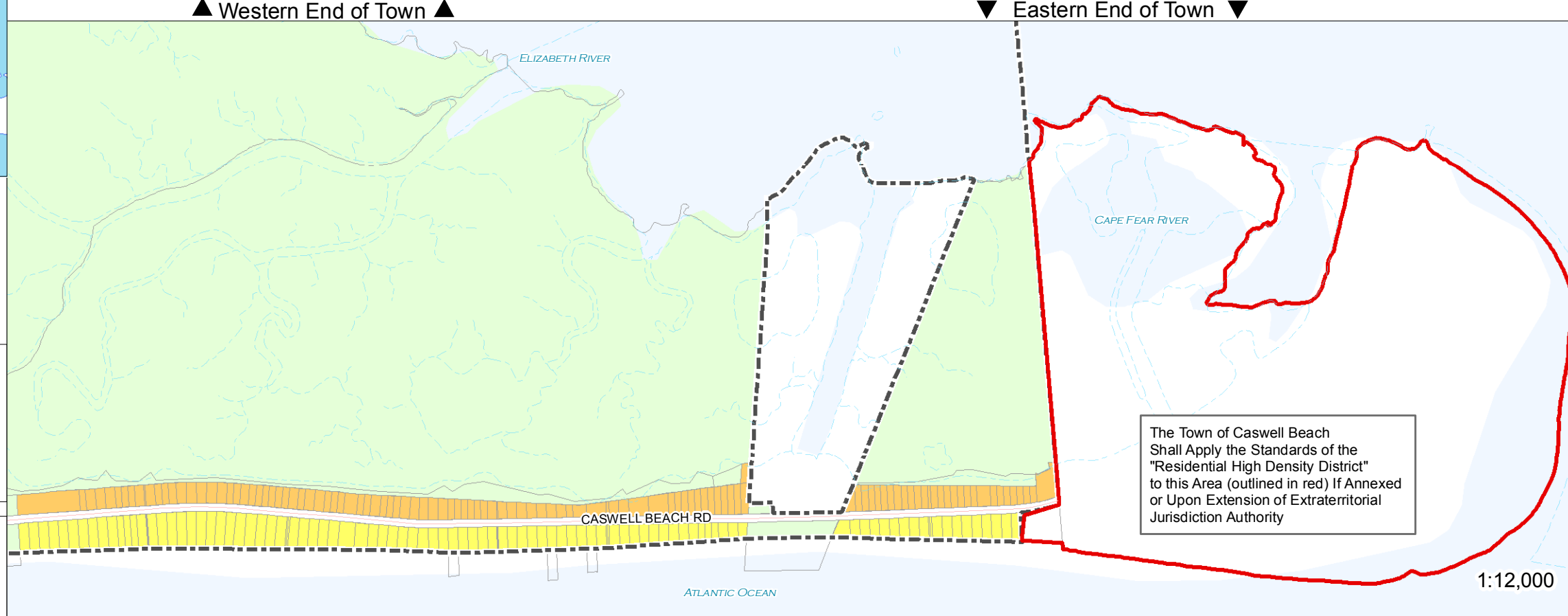
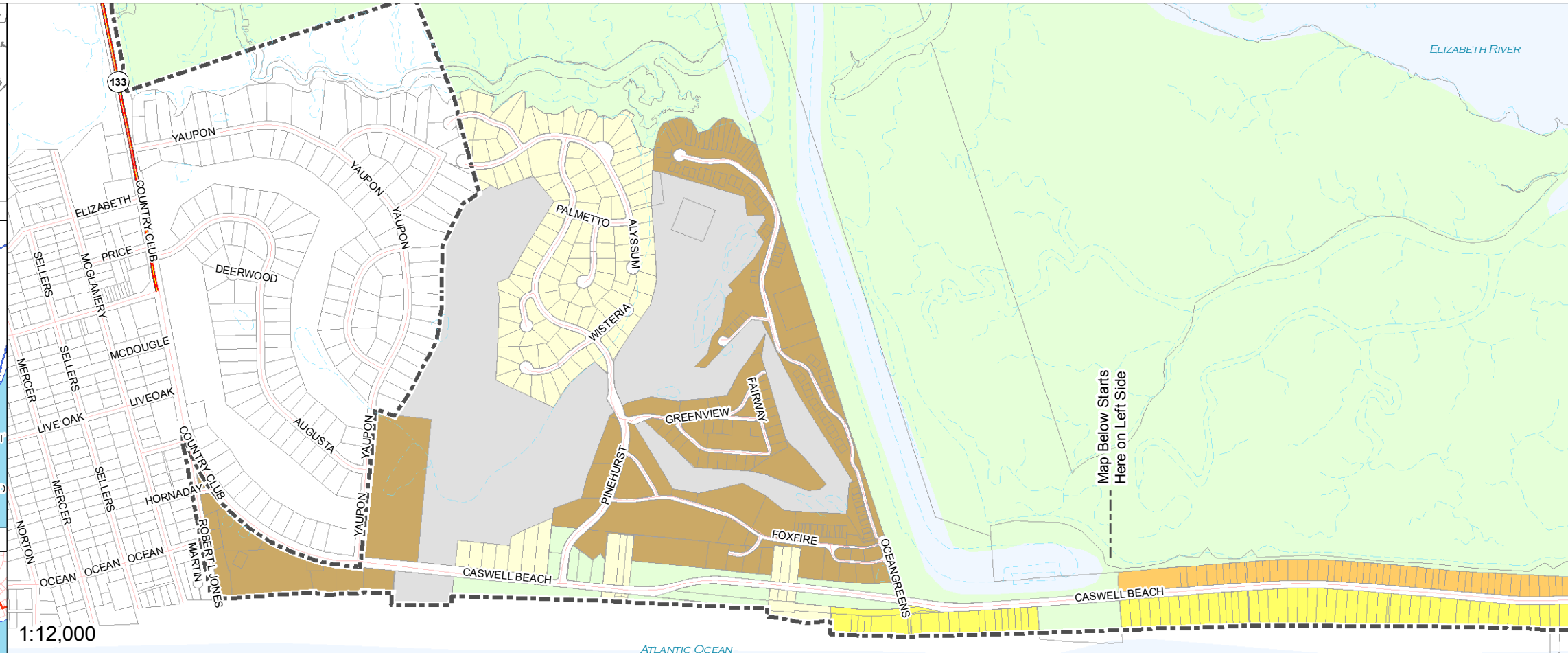


14-Digit Hydrologic Unit:
 The planning jurisdiction of Caswell Beach lies completely within HUC #03030005070010. See Policies 4(b) and 38 - 41. See Section 4.1.1 (8) in the Land Use Plan for 303 (d) list waters in the planing jurisdiction.

Map is to be used for general informational purposes only. Spatial data used to generate this map was gathered from disparate sources and represent a condition at a fixed period in time. 100% accuracy of spatial data to current circumstances cannot be guaranteed.



Map prepared by:
 Scott Logel
 Cape Fear Council of Governments
 1480 Harbour Drive
 Wilmington, NC 28401



Town of Caswell Beach
2006/2007 CAMA
Land Use Plan
Future Land Use Classification Map

- Legend**
- Primary Road
 - Municipal Limits
 - Roads
 - Conservation
 - Commercial Recreation
 - Residential Low Density
 - Residential Medium Density
 - Residential Medium-High Density
 - Residential High Density

In addition to the Conservation Areas identified on this Map, See Maps 8 and 10 for environmentally sensitive areas and areas less suitable for development.

See Map 11 for Service Area Boundaries for planned and existing water and sewer infrastructure.

1 inch equals 1,000 feet
 1 inch equals 0.19 miles

The preparation of this map was financed in part through a grant provided by the North Carolina Coastal Management Program, through funds provided by the Coastal Zone Management Act of 1972, as amended, which is administered by the office of Ocean and Coastal Resources Management, National Oceanic and Atmospheric Administration.



The Town of Caswell Beach Shall Apply the Standards of the "Residential High Density District" to this Area (outlined in red) If Annexed or Upon Extension of Extraterritorial Jurisdiction Authority

DRAFT